

# Space Planning & Measuring Guide



**Questionnaire, Preliminary  
Measurements & Sketch Worksheet**

# How to Use This Guide

This guide will help you begin thinking through your space and gather initial measurements before your design appointment. Your sketch does not need to be perfect – our design team will review everything with you.

## Please complete as much as you can before your appointment:

- Fill out the kitchen design questionnaire *(if applicable)*.
- Sketch the existing space using the graph paper provided or a blank sheet of paper.
- Record the initial measurements requested in the measuring instructions.
- Take clear photos of the space from several angles.
- Bring the completed project questionnaire, sketch, photos, and any inspiration images or appliance information to your appointment.



*Your sketch does not need to be professionally drawn or perfectly to scale. Clear, labeled measurements and notes are more important than a precise drawing.*

## Preliminary Measurement Disclaimer

The measurements collected with this guide are intended for preliminary planning and design discussions only.

Final dimensions, site conditions, and installation requirements should be verified before any products are ordered. Corner Cabinet is not responsible for errors resulting from unverified customer-provided measurements.

# Kitchen Design Questionnaire

Tell us a little about your kitchen project and how you use your current space. This information will help our design team better understand your needs, priorities, and timeline before your first appointment.

*Print this page and fill out or use a separate piece of paper to answer if needed.*

## How Many People Live in Your Household Now?

---

## In Five Years?

---

## Do You Have Pets?

---

## What Kind of Cooking Do You Do?

- Basic Meals     Baking  
 Lots of Prep and Cooking

## Are You Looking For An Island?

- Yes     No  
 Yes, with seating

## What Activities Will Take Place in Your Kitchen?

- Homework     TV     Paying Bills  
 Hobbies     Hanging Out  
 Office Work     Other

---

## What Type of Entertaining Do You Do?

- N/A     Casual Get-Togethers  
 Holiday Meals     Dinner Parties  
 Cocktail Parties     Other

---

Do You Recycle?  Yes  No  If it's Easy

Do You Need: Pet Food Storage?  Yes  No

Linen Storage?  Yes  No  Maybe

Serving Tray Storage?  Yes  No  Maybe

Do You Display China/Collectibles?  Yes  No

Do You Have Many Utensils & Small Gadgets That Require Drawer Space?  Yes  No

## Which Appliances Do You Plan to Replace?

- Stove     Dish Washer  
 Refridgerator     Other

---

## What Small Appliances Do You Use Regularly?

- Blender     Microwave     Juicer  
 Toaster     Mixer     Coffee Maker  
 Crock Pot     Air Fryer     Other

---

## Where Would You Like to Store Your Small Appliances?

- Countertop     Inside Cabinets  
 Pantry     Other

---

## Do You Like Your Spices:

- Organized - In a Drawer  
 Organized - In a Pull-Out  
 Other

---

## Are There Any Special Considerations Your Designer Should Know?

---

---

## What Do You Like Most About Your Current Kitchen?

---

---

## What Do You Dislike About Your Kitchen?

---

---

## What Do You Want to Be Able to Do That You Cannot Do in Your Current Kitchen?

---

---

# Before You Measure

A little preparation will make the initial measuring process easier and help you gather more useful information for your design appointment. Before you begin, collect the recommended tools, and review the items that should be included on your sketch. Your measurements do not need to be perfect—focus on recording each dimension and fixed feature as clearly as possible.



## You Will Need

- Tape Measure
- Pencil with Eraser
- Graph Paper or a Blank Sheet of Paper
- Clipboard or Firm Writing Surface
- Calculator
- Phone or Camera for Photos
- Step Stool, if needed
- Someone to Assist with Longer Measurements

## Keep in Mind

All measurements should be recorded in inches. Do not worry about drawing perfectly to scale; clear labels are more important. These measurements are for preliminary planning and will need to be verified before products are ordered.

# How to Measure Any Space

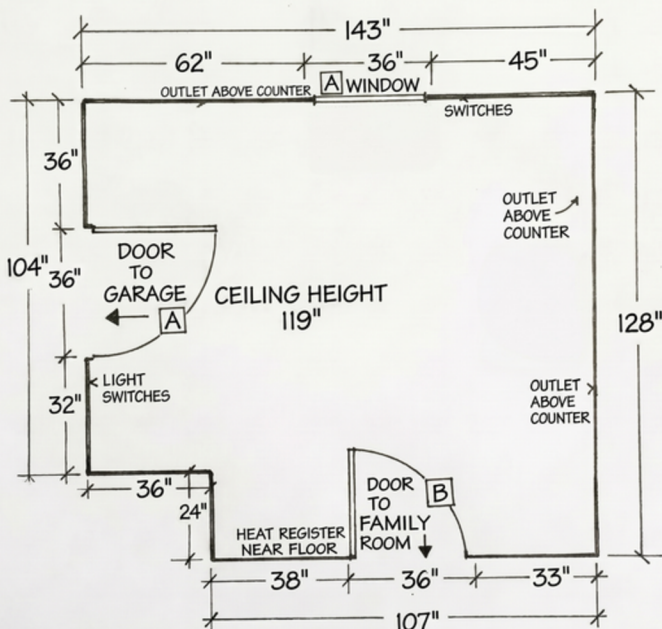
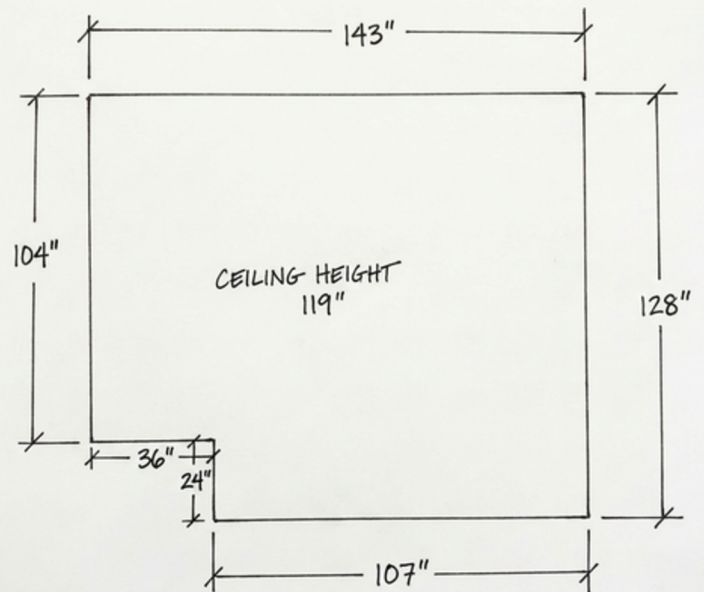
Follow these steps to create a clear sketch and record the basic measurements of your space. Take your time and label each dimension as you go.

## Step 1

Draw a simple outline of the shape of the room.

Start in one corner and measure clockwise. Record the overall length of each wall.

Measure the ceiling height in several different locations. Record the **lowest** height



## Step 2

Label doors and windows A, B, C, etc. and indicate where the door leads (garage, living room, etc.).

Record the width of each door and window including the trim as part of the measurement.

Indicate the location of switches, outlets, and registers.

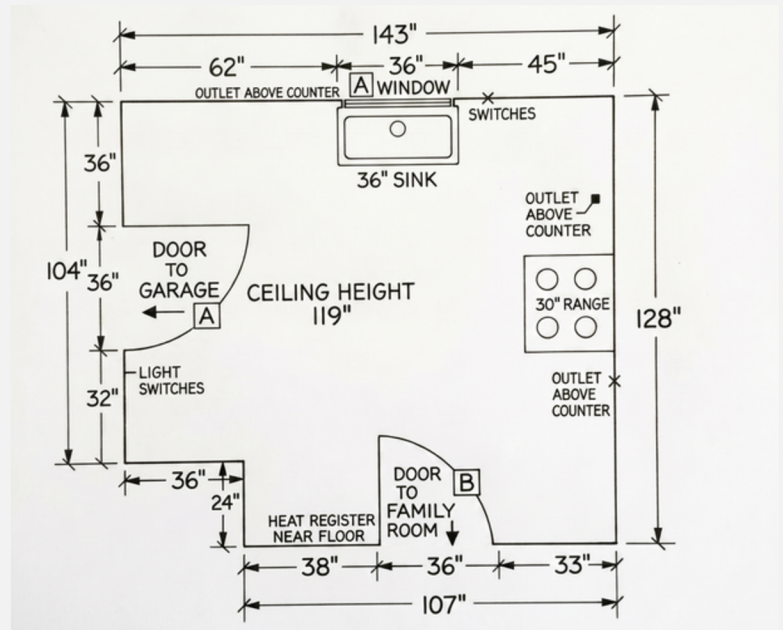
# Step 3

Measure appliance locations by recording the distance from the end of the wall to the center of the appliance.

Measure the width of the appliance itself.

Record the rough location on your sketch with all above measurements.

*Please note, depending on the room you are renovating, appliances may not be applicable. Please fill out the rest of the measurements and skip any reference to appliances.*



# Step 4

Use the tables below to input window, door, and **new** appliance details.

## Windows

Window	A	B	C	D	E	F	G
Width							
Height							
Floor to Sill							

## Doors

Door	A	B	C	D	E	F	G
Width							
Height							

Soffit LxWxH

---

Ceiling Height

---

# Kitchen Measurement Details

In addition to the basic room measurements, kitchens require a few extra details to support accurate preliminary planning. Use this section to record appliance sizes, plumbing and utility locations, and any existing features that may affect the design.

## Islands & Peninsulas

Existing Feature:  Island  Peninsula

Feature	Length	Depth	Height
Island			
Peninsula			

### Additional Details

Number of Seats

---

Overhang Depth

---

Will it Remain?  Yes  No  Maybe

### Island Features to Note

- Sink  Seating  Cooktop  
 Plumbing  Electrical  
 Other
- 

### Peninsula Features to Note

- Sink  Seating  Cooktop  
 Plumbing  Electrical  
 Other
- 

## Kitchen Appliances

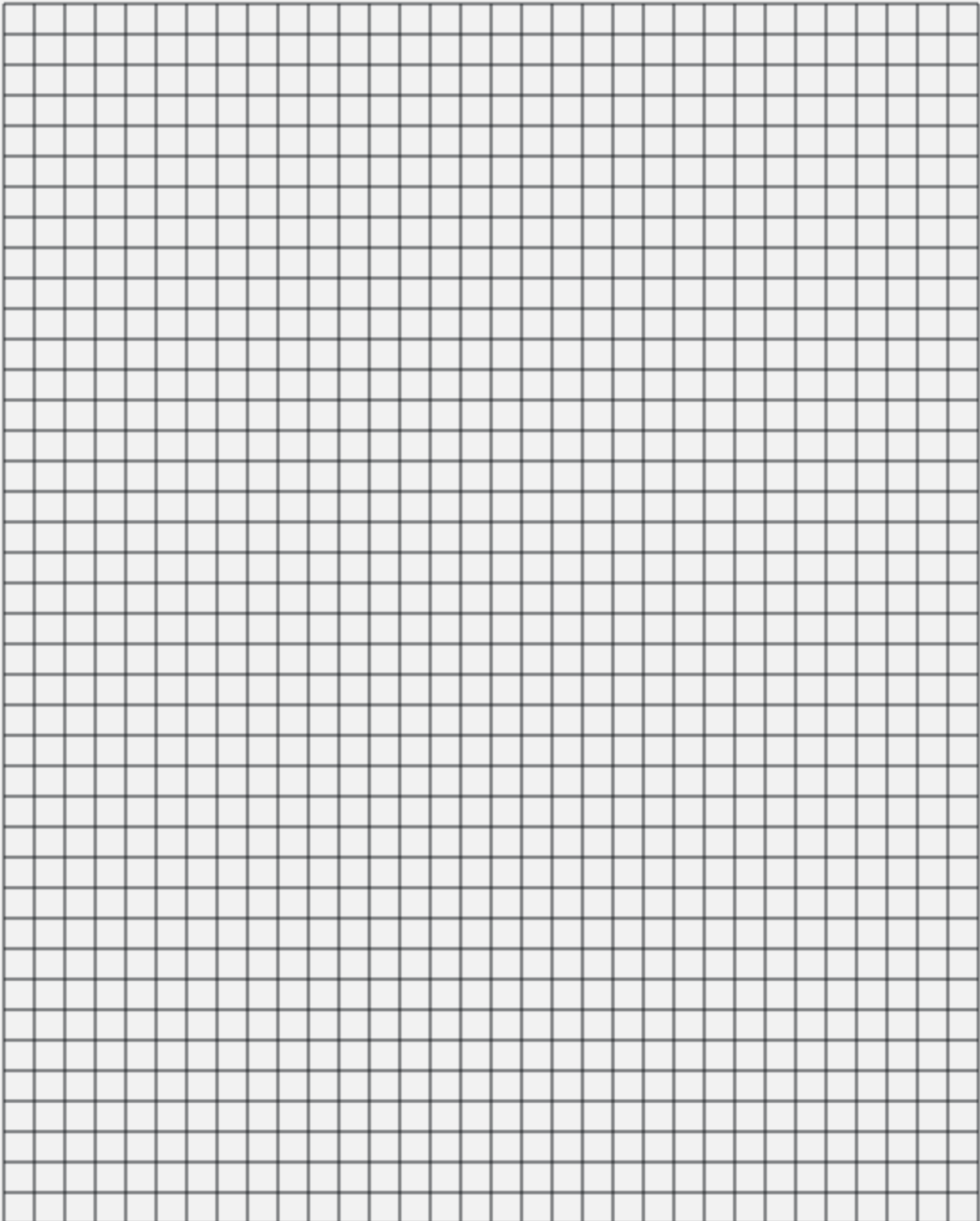
(ones to be used in renovation)

Appliance	Model	Size LxWxH	Hinge Position
Fridge			
Sink			
Range			
Dishwasher			
Microwave			
Exhaust Hood			
Wall Oven			
Cooktop			
Other			



# Graph Paper

Use this graph paper or a blank sheet of paper for your sketch. It does not need to be to scale, as long as measurements are clearly labeled.



# Photo Checklist

Clear photos help our design team better understand the layout, condition, and fixed features of your space. Use this checklist to capture the room from several angles, including any details that may not be obvious on your sketch.

- One clear photo of each wall
- Wide-angle photos showing the entire space from several viewpoints
- Doors, doorways, and adjoining rooms
- Windows and surrounding trim
- Existing cabinetry, countertops, and built-in features
- Appliances and their current locations
- Sink, plumbing, and utility connections
- Outlets, switches, vents, radiators, and electrical panels
- Soffits, beams, sloped ceilings, or other architectural details
- Islands, peninsulas, or freestanding furniture
- Any damaged, uneven, or unusual areas that may affect the design
- Close-up photos of details that are difficult to show on the sketch



*It is perfectly fine to keep these photos on your cell phone and share them with your designer during your appointment. Photos taken with a digital camera may be downloaded and emailed to your designer in advance or after the meeting.*

# Appointment Prep Checklist

A little preparation will help you get the most from your design appointment. Use this checklist to gather the information, measurements, photos, and inspiration materials that will help your designer understand your space and project goals.

- Completed Kitchen Design Questionnaire, *if applicable*
- Rough sketch of the existing space
- Preliminary room measurements
- Photos of the space from several angles
- Appliance dimensions or specification sheets
- Inspiration photos, saved images, or material samples
- Notes about your storage and functional needs
- A list of features you would like to include
- A list of anything you would prefer to avoid
- Preferred style, colors, and finishes
- Approximate budget or investment range
- Desired project timeline
- Contractor, builder, or installer information, if applicable
- Questions you would like to discuss with your designer

*We look forward to learning more about your project and working with you to create a space that is both functional and thoughtfully designed!*

