

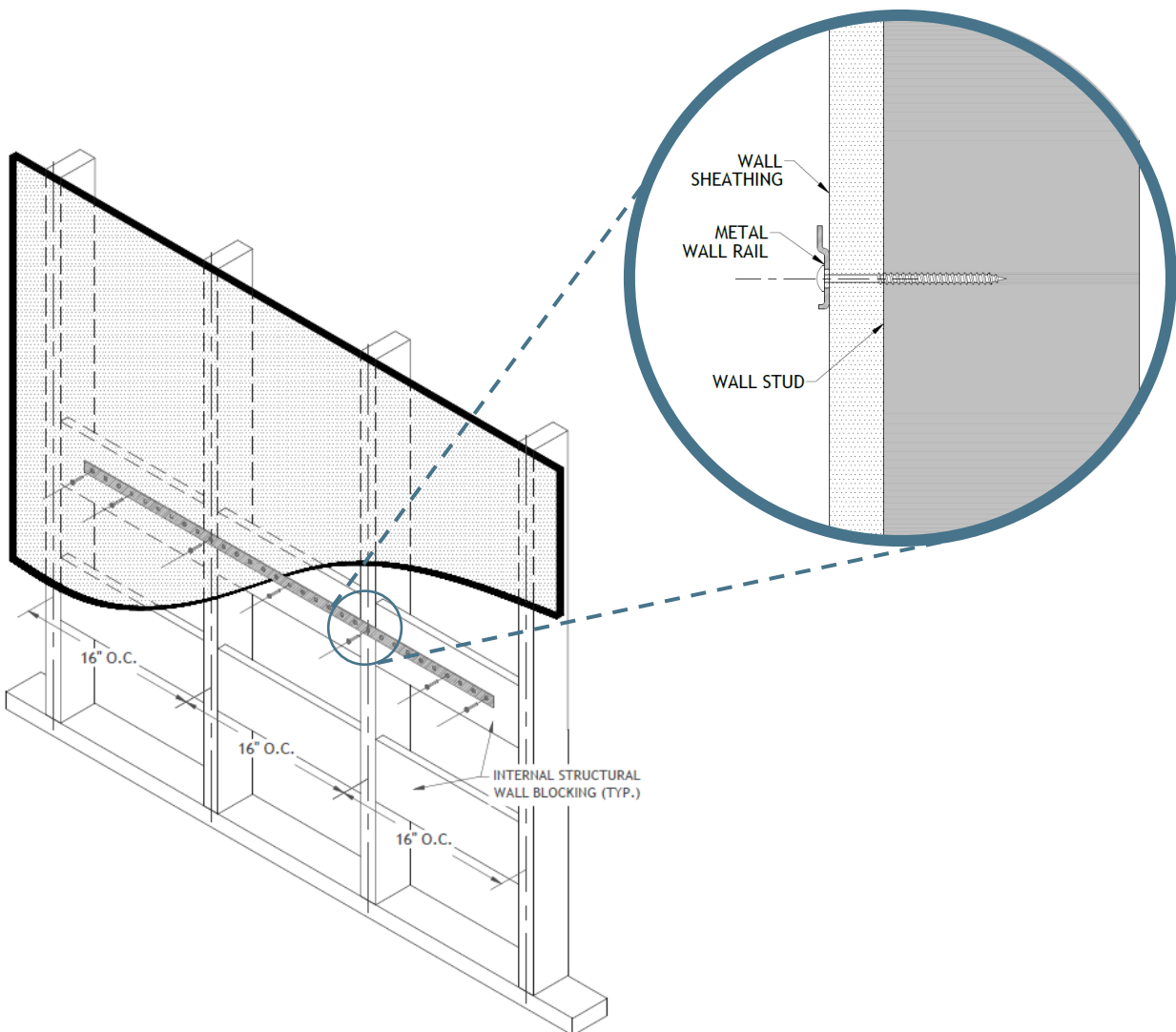
Wall-Hung Vanity Installation Instructions

Pre-Installation

- Locate and mark the wall where vanity wall hung cabinet will be installed.
- Locate all wall studs. **Install internal structural wall blocking between wall studs if not present.** Refer to internal wall blocking installation found later in these instructions.

Metal Hang Rail Installation

- Locate and install the metal wall hang rail in the required location to match pre-determined height and width for cabinet placement.
 - Install rail to the wall with #8 x 2 1/2" washer head installation screws.
 - Installation screws to be located a maximum of 1" from each end of the rail.
 - Installation screws to be located in all wall studs and be placed between studs in the internal structural wall blocking.
- Use a carpenter's level to check metal wall hang rail for level. Reposition as required to ensure level.



Wall-Hung Vanity Installation Instructions

Cabinet Mounting to Wall

- Use a Phillips head screwdriver to slightly loosen (turn counter-clockwise) the horizontal screw located in the face of each install cleat located on the inside of the cabinet mounted on each end panel.
- Lift cabinet into place.
 - The hooks from the install cleat will protrude through the cabinet back.
 - The hooks are intended to rest on the top channel of the pre-installed metal wall hang rail.
- Cabinet should now be hanging from the metal hang rail.
 - Check for level. If cabinet is not level, adjustments can be made to required install cleat by using height adjustment screw found on the underside of the install cleat.
 - Turn screw counter-clock wise to increase height
 - Turn clockwise to decrease height
- Use a Phillips head screwdriver to tighten (turn clockwise) the horizontal screw located in each install cleat to securely pull the cabinet tight against the wall.



Completing the Installation

- Cabinet must be fully screwed to wall with #8 x 2 1/2" washer head installation screws into all wall studs and internal structural wall blocking.
- Refer to cabinet installation found later in these instructions for more specifics on the installation screws in all wall studs and internal structural wall blocking.

