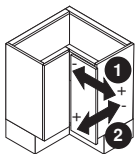


Hinge Adjustments

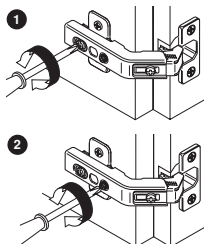
CLIP Bi-fold Hinge

Side / Depth Adjustment

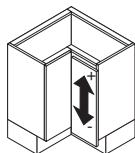


1 Side adjustment
Loosen back screw, position door, retighten.

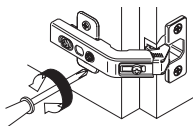
2 Depth adjustment
Turn front screw to achieve desired door position.



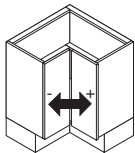
Height Adjustment



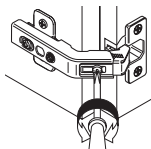
Loosen screws on mounting plate. Adjust door to position, tighten screws.



Gap Adjustment



Loosen center gap screw, adjust arm, retighten.



Door Removal and Installation

Release the lever under the hinge arm to remove.

To reinstall, place the hinge on the mounting plate and push the back with finger pressure. The "CLIP" sound confirms a secure attachment.

